

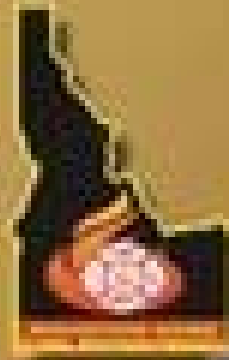
Mountain Home Academy of Fire

IVFESA 2018 Conference



Celebrate the Past

Sept 24-26 - 2018
Mountain Home
Mountain Home Academy



Awaken the Future...

Mountain Home Academy of Fire
Mountain Home, ID 2018
Sept. 21st-23rd

Class Schedule

Course	Description	Length	Requirements	Instructor
The Rural Fire Engine	"The Rural Engine" – An engine company advanced essentials class designed to challenge the capabilities of the first due engine to a rural structure fire. Emphasizing the expectation that manpower may be limited, and additional resources are several minutes out, or don't exist. Firefighters will be increasing their proficiency and tempo of forcible entry, hose line deployment, and completion of the primary search. After focusing on each of these skills individually, firefighters will be challenged to put it all together for some progressive evolutions that will include all of the focus areas being completed by the first arriving 3 or 4-man crew.	16 hrs.	Prerequisites: none. Full PPE required, including SCBA, helmet, pants, coat, gloves, goggles, boots and hood. Proof of Workers Compensation required.	Rob Shoplock – Bat. Chief, Eagle FD Ben Rosenbaum, EFD/Bros. in Battle Stephen Tyler EFD/Bros. in Battle Brian Olson EFD/ Bros. in Battle Sean Marvin EFD
Modern Fire Behavior	Lightweight energy efficient construction; modern fuels, firefighter encapsulation and manpower reductions have combined to make today's residential firefight a dramatically new challenge for even the most experienced firefighter. Chief Van Dorpe presents a no-nonsense, fact-filled presentation that is packed with great information for firefighters interested in expanding their understanding of fire ground strategy, tactics and fire behavior. Chief Van Dorpe folds in his decades of experience in a traditional, aggressive, busy urban department in to his work and passion in the NIST/UL research. This workshop brings together cutting-edge research and best practices from around the country to help develop tactics for fighting fires involving modern fuels in either traditional or modern construction.	16 hrs.	None	Pete Van Dorpe – Chief, Algonquin-Lake in the Hills - RET. Chief of Training, Chicago FD
Basic Extrication	Classroom presentations consist of scene safety, vehicle extrication considerations & stabilization techniques. HOT will cover scene safety, vehicle safety & stabilization, extrication techniques from basic tools to power hydraulics. Basic patient care and removal.	20 hrs.	Full PPE required, including helmet, pants, coat, gloves, goggles, boots and hood. Proof of Workers Compensation required.	Alan Roberts - Chief Elmore County Rescue, Engineer MHFD Mark Rabdau
Advanced Extrication	Advanced vehicle systems, air bags, glass, safety systems, multiple vehicle extrications & techniques, lifting, stabilization, concrete barrier entrapment, and advanced tool operations will be covered in this course.	20 hrs.	Must have completed a basic extrication course. Full PPE required, including helmet, pants, coat, gloves, goggles, boots and hood. Proof of Workers Compensation required.	Jeff Gates
Pre-Hospital Trauma Life Support (PHTLS)	NAEMT's – PHTLS is recognized around the world as the leading continuing education program for prehospital emergency trauma care. The program is based on a philosophy stressing the treatment of the multi-system trauma patient as a unique entity with specific needs. PHTLS promotes critical thinking as the foundation for providing quality care.	16 hrs.	None	Leo Gilbride – Elmore Ambulance Service
Idaho Fire Code Official	Analysis of the intent of the fire codes and how to apply them in individual fire districts. How to use good judgement and discretion considering the district's capabilities, apparatus, terrain and access roads to apply the codes fairly and equitably	20 hrs.	None	Tom Mroz- Deputy State Fire Marshal

Fire Investigations for the First Responder	This course emphasizes the importance of determining the cause of fire. Explains the burning characteristics of combustibles and the effects of fire on various materials. How to interpret burn patterns and isolate the area and point of origin. How to identify incendiary indicators, sources of ignition and materials ignited.	16 hrs.	Prerequisites: none. PPE required including pants, coat, helmet, gloves, boots.	Alan Perry, Jason Blubaum- Deputy State Fire Marshals
Wildland S-215	S-215 Fire Operations in the Wildland/Urban Interface. This course is designed to assist structure and wildland firefighters who will be making tactical decisions when confronting wildland fire that threatens life, property, and improvements, in the wildland/urban interface. Instructional units include interface awareness, size-up, initial strategy and incident action plan, structure triage, structure protection tactics, incident action plan assessment and update, follow-up and public relations, and firefighter safety in the interface.	16 hrs.	Prerequisites: None	Brad Trosky
Haz-Mat Ops	This course will focus on the requirements for Hazardous Materials Awareness and Operations levels which will safely outline what actions should be taken. Additionally, adding in some of the "Mission Specific Competencies" which will assist in coordination with the regional Haz-Mat teams.	20 hrs.	Turnouts, gloves, helmet or hardhat & boots.	Alan Lawler- MHFD, former Capt.- MHAFB FD, Elmore County Rescue
RIT	This course will take students thru all aspect of operating a RIT team on the fire ground. Fire ground responsibilities, duties and actions will be covered. Detailed rescue techniques and styles will be taught.	16 hrs.	Full PPE including pants, coat, helmet, hood, gloves and boots required. Please bring SCBA is available.	Jerry Hollenbeck
Preparations for the Initial Company Officer- PICO	PICO is designed to provide a basic foundation for the management of one or more companies operating at a structural fire emergency. The focus is a review of basic concepts and development of proficiency in critical skills. Key content includes Roles & Responsibilities, readiness, communications, building construction and fire behavior factors and pre-incident planning.	20 hrs.	None	David Gates – Chief, Pocatello FD - President, IFCA
Technical Rope Rescue	Students will learn the basics of ropes & knots, terminology and equipment. Techniques for rappelling, ascending and mechanical advantage, patient packaging. This class will cover low/high angle rescue at the awareness and operations level.	20 hrs.	SPECIAL REGISTRATION INFO: Technical Rope Rescue course form must be completed and received no later than 8.20.18. Prerequisites: None PPE including the following required: Helmet w/chin strap, leather gloves, goggles/safety glasses, boots. Proof of Workers Compensation coverage required.	Brad Buehler – MHFD, Elmore County S&R, & OCTR, former Capt. MHAFB FD Wes Beach – MHAFB FD & Elmore County S&R
Flashover Training	This course will teach you to develop a working definition of a flashover, understand the 3 phases of flashover development, identify the 5 signs of a n impending flashover, and identify factors which can influence the development of a flashover. Most importantly, firefighters will learn how to limit flashover development under realistic fire conditions along with understanding the limitations of modern day structural firefighting gear. Advisory: This training is rigorous and should only be attempted by students in good physical condition. Beards and/or facial hair (except mustaches) will not be allowed in live burns.	16 hrs.	Full PPE required, including SCBA, helmet, pants, coat, gloves, goggles, boots and hood. Proof of Workers Compensation required.	TBD

LODGING

Mention this conference while booking your room for special pricing.

HAMPTON INN & SUITES 3175 NE Foothills Ave. 208.587.7300	BEST WESTERN 1080 US-20 208.587.8477	MOUNTAIN HOME INN 1180 US-20 208.587.9743
--	--	---

CAMPING/RV

MOUNTAIN HOME RV PARK 2295 American Legion 208.580.1211	GEM STATE RV PARK 220 East 10 th North 208.587.5111
---	--

Friday, Sept. 21st

4:00pm – 6:00pm Registration, Cottonwood Room, Hampton Inn
5:00pm – 7:00pm Meet & Greet, Cottonwood Room, Hampton Inn
6:00pm – 10:00pm Evening Classes

Saturday, Sept. 22nd

7:00am – 8:00am Elmore Search & Rescue Fundraiser Breakfast, Hacker Middle School Cafeteria
8:00am – 8:30am Opening Ceremonies, Hacker Middle School Gym
8:30am – 12:00pm Class
12:00pm – 1:00pm Lunch, Hacker Middle School Cafeteria
1:00pm – 5:00pm Class
6:00pm – 9:00pm Dinner & Social, Stockyard Nightclub

Sunday, Sept. 23rd

7:00am – 8:00am Elmore Search & Rescue Fundraiser Breakfast, Hacker Middle School Cafeteria
8:00am – 12:00pm Class
12:00pm – 1:00pm Lunch, Hacker Middle School Cafeteria
1:00pm – 5:00pm Class

Mountain Home Academy of Fire
 Sept. 21st-23rd, 2018
 Mountain Home, ID

Full Name:			
Address:	City:	State:	ZIP:
Fire/EMS Dept:		Phone:	
Personal Phone:		Email:	
Fire/EMS Chief (printed name):			
Chief Signature:			

**If you are planning on taking the TECHNICAL ROPE RESCUE COURSE
 complete the following information and return registration by 8.17.2018**

SSN:	Drivers Lic. #	State:
-------------	-----------------------	---------------

Class registration is based on a first come, first served basis. As some courses have a maximum class load, please mark your first-choice class and then a second-choice class in the event that your first-choice is full. Students will be notified if they do not get their first-choice class.

1 st Choice	2 nd Choice	Friday	Saturday	Sunday	Course
			8 hrs.	8 hrs.	The Rural Fire Engine
			8 hrs.	8 hrs.	Modern Fire Behavior
		4 hrs.	8 hrs.	8 hrs.	Basic Extrication
		4 hrs.	8 hrs.	8 hrs.	Advanced Extrication
		4 hrs.	8 hrs.	8 hrs.	Pre-Hospital Trauma Life Support
		4 hrs.	8 hrs.	8 hrs.	Idaho Fire Code Official
			8 hrs.	8 hrs.	Fire Investigations for 1 st Responders
			8 hrs.	8 hrs.	Wildland S-215
		4 hrs.	8 hrs.	8 hrs.	Haz-Mat Ops
			8 hrs.	8 hrs.	RIT
			8 hrs.	8 hrs.	PICO
		4 hrs.	8 hrs.	8 hrs.	Tech Rescue *SEE NOTE ABOVE
			8 hrs.	8 hrs.	Flashover

Mail checks and registrations to: **Mountain Home Fire Dept., c/o FIRE ACADEMY,
 220 S. 2nd E., Mountain Home, ID 83647**

Please include Proof of Worker's Compensation coverage with registration.

Registrations must be received no later than 9.7.2018

Item	Cost	Size	Sub-Total
Current IVFESA members	Free		
Non-members	\$50		
New Membership	\$35		
Conference T-shirt	\$20 (XXL \$22)		
Breakfast (2 days)	\$16		
TOTAL ENCLOSED:			\$